

TASKalfa 3554ci

The versatile TASKalfa 3554ci is the ideal partner for today's ever changing business environments. With reliable performance and reduced maintenance needs, your team can stay focused on their own tasks as this MFP is always ready to deliver the results they are counting on. A user-friendly 10.1 inch with a new simple, intuitive and efficient user interface will make operating the device straightforward and easy. Together with sharp black text and high impact colour output with an exceptional range of scanning, input and professional finishing options, businesses can focus on what matters most. In addition, this MFP is equipped with the latest security and highly productive intelligent features.



TASKalfa 3554ci



**Color Multifunction
for A4/A3 Format**



Up to 35 Pages A4 per Minute



Up to 1,200 x 1,200 dpi Resolution



Memory 4GB (Max. 4GB)



10.1 inch Resistive Touch Panel

Outstanding Image Quality

The TASKalfa 3554ci gives you incredible image quality and outstanding colors with high resolution and superior image processing.



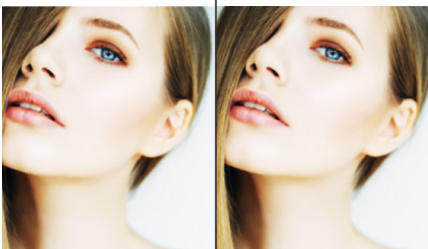
Delivers realistic image with high resolution

Provides printing resolution of 1,200dpi. You will enjoy sharp, detailed print results even in fine lines and small characters, giving your image a bright and vivid impression along with the realistic texture.

Impressive quality even for repeated copies

Reduces the color difference with accurate color matching when digital copying, and also avoids quality degradation during repeated photocopying.

Stable print quality



The 1st page

The 1000th page

Keeps the stability of color performance, no matter for the 1st page or the 1,000th or more.

Beautiful contrast



Existing model

New model

Provides a better contrast with incredible deep blacks.

High gloss



Existing model

New model

Performs a glossy finishing on images.

TASKalfa 3554ci				
Main Specifications			TASKalfa 3554ci	
Main Function			Copy, Print, Scan, Fax (Optional)	
Writing Method			Semiconductor Laser	
CPU			ARM A53 1.6GHz	
Print Speed (A4) (Mono/Color)			35/35 ppm	
Scanning Speed (A4) 300dpi	DP-7140	Simplex	50 ipm	
		Duplex	16 ipm	
Scanning Speed (A4) 300dpi	DP-7150	Simplex	80 ipm	
		Duplex	48 ipm	
Scanning Speed (A4) 300dpi Dual Scan	DP-7160	Simplex	100 ipm	
		Duplex	200 ipm	
Scanning Speed (A4) 300dpi Dual Scan with Duplex Feed Detection DP	DP-7170	Simplex	100 ipm	
		Duplex	200 ipm	
Memory			Standard 4GB (Max. 4GB)	
SSD/HDD Capacity			SSD 32GB (Standard) / HDD 320GB or 1TB (Optional)	
Stable Time (From the mainpower ON)			18 seconds	
Paper Capacity	Standard		2 x 500 sheets (Cassette) + 150 sheets (MPT) (A4 / Letter size or less equivalent to 80 g/m2) 2 x 600 sheets (Cassette) + 165 sheets (MPT) (A4 / Letter size or less equivalent to 64 g/m2)	
	Maximum		7,150 sheets (Main Unit + 2 x 1,500 sheets PF-7150 x1 + 3,000 sheets PF-7120 x1 + MPT)	
Paper Size	Cassette		Min. A6R - Max. SRA3(320mm x 450mm); Cassette 1 Min. A6R – Max. A4R (Legal)	
	MPT		Min. A6R - Max. SRA3(320mm x 450mm) & Banner Print (1,220mm x 304.8mm)	
Paper Weight	Cassette		52~300g/m2	
	MPT		52~300g/m2 ; Banner paper 136~163g/m2	
Duplex Printing			Paper size: Min. A6R - Max. SRA3(320mm x 450mm) ; Paper weight: 60~256g/m2	
Output Capacity			Max. 500 sheets + 100 sheets face-down with Inner Job Separator	
Control Panel			10.1 inch resistive touch panel	
Dimension (W x D x H) (Main Unit)			602mm x 665mm x 790mm	
Weight (Main Unit)			Approx. 90 kg	
Power Consumption (Standard configuration)	Copy/Print Mode		590W	
	Stand-by Mode		40W	
	Energy Saver		0.5W	
Noise (ISO7779/ ISO9296)	Copy/Print Mode (Mono/Color)		68dB/69dB	
	Stand-by Mode		35dB	
			Copy Functions (Standard)	
Copy Size			Max. A3 (Ledger) - Min. A6R (StatementR)	
Resolution			Scanning: 600 x 600 dpi ; Writing: 1200 x 1200 dpi multiple value	
First Copy Time (Mono/Color)			5.3/7.0 seconds	
Zoom Ratio	Manual		25% - 400% (1% per Step)	
Multiple Copy			1 - 9,999	
			Print Functions (Standard)	
Resolution			1,200 x 1,200 dpi ; 4,800 equivalent x 1,200 dpi level	
PDL & Emulation			PRESCRIBE, PCL6 (PCL-XL, PCL 5c), KPDL3 (Postscript 3 compatible), XPS, OpenXPS, PDF Direct Print Ver. 2.0	
First Print Out Time (Mono/Color)			5.9/7.7 seconds	
Supported Protocol			TCP/IP(IPv4/IPv6), Bonjour	
Operating System Supported			Windows 8.1/10, Windows Server 2012/2012 R2/2016/2019, Mac OS X(10.9~), Google Chrome OS	
Interface			Ethernet (1000Base-T/100Base-TX/10Base-T)x1, USB 3.0x1, USB Host Interface (USB Host)x4, NFC TAGx1	

	Scan Functions (Standard)
Original size	Table: Max. A3 (Ledger) DP: Max. A3 (Ledger) - Min. A6R (DP-7140 is A5R) Banner: Max. 1,900mm
Resolution	600 x 600 dpi, 400 x 400 dpi, 300 x 300 dpi, 200 x 200 dpi, 200 x 100 dpi, 200 x 400 dpi
File Format	TIFF, JPEG, XPS, OpenXPS, PDF (MMR/JPG compression/High-compression PDF), PDF/A-2, Encrypted PDF, Searchable PDF (Optional), MS Office file(Optional)
Image Type Mode	Text, Photo, Text + Photo, Text (Fine Line)
Send Method	SMB (Version 3.0), SMTP, FTP, FTPoverSSL, USB, TWAIN Source (Network), WIA Driver (Network), DFS, DSM
Address Storage	2,000 addresses (Common address list), 500 groups (Group address list)
	Fax Functions (Optional)
Original Size	Max. A3 (Ledger) - Min. A6R (StatementR), Banner: 1,600mm
Coding Method	MMR, MR, MH, JBIG
Transmission Speed	33.6 kbps
Transmission Time	Less than 3 sec. (With JBIG)
Memory	170MB
	Consumables & Options
Toner Kit	TK-8370 (C/M/Y): 20,000 pages TK-8370 (K): 30,000 pages
Maintenance Kit	MK-8335 (A/B): 200,000 pages MK-8345 (D/E): 600,000 pages
Waste Toner Bottle	WT-8500
Document Processor	DP-7150: 140 sheets RADF Type; DP-7140: 65 sheets RADF Type (TASKalfa 2554ci / TASKalfa 3554ci only); DP-7160: 320 sheets One-path Duplex Scanning Type;w DP-7170: 320 sheets One-path Duplex Scanning Type with double paper feeding detector
Paper Feeder	PF-7140: 500 sheets x 2; PF-7150: 1,500 sheets x 2 (A4/Letter); PF-7120: 3,000 sheets Large capacity side deck (A4/Letter)
Finisher	DF-7100: Inner Finisher *No support for 70ppm; AK-7110: Attachment Kit; DF-7120: 1,000 sheets Finisher; DF-7140: 4,000 sheets Finisher with 65 sheets Staple; DF-7150: 4,000 sheets Finisher with 100 sheets Staple; PH-7C: Punch Unit for DF-7120/DF-7140/DF-7150; PH-7120: Punch Unit for DF-7100; MT-730(B): 7 Bin Mailbox for DF-7140; JS-7110: Inner Job Separator; IS-7100**: Inserter Unit; ZF-7100**: Z Folding Unit; BF-730: Booklet Folder for DF-7140; BF-9100: Booklet Folder for DF-7150; SH-10: Staple for DF-7100/DF-7120/BF-730/BF-9100; SH-12: Staple for DF-7140; SH-14: Staple for DF-7150
Fax System	Fax System 12
Internet FAX	Internet FAX Kit(A)
Card Authentication	Card Authentication Kit(B)
Gigabit Ethernet Board	IB-50
Wireless LAN Interface	IB-37 (Wi-Fi 2.4 GHz/5 GHz multi-band support) / IB-38 (Wi-Fi 2.4 GHz capable) *IB-38 for Indonesia, Bangladesh only
Storage Device	HD-15: HDD 320GB, HD-16: HDD 1TB
Embedded OCR	Scan Extension Kit(A)
Banner Paper Tray	Banner Guide 10
Numeric Key Pad	NK-7120
Original Tray	DT-730 (B)
Keyboard Holder	Keyboard Holder 10



บริษัท เคียวเซรา ด็อกคิวเมนต์ โซลูชั่นส์ (ประเทศไทย) จำกัด
 335 ถนนรัชดาภิเษก แขวงวงศ์สว่าง เขตบางซื่อ กรุงเทพฯ 10800
 โทร. 0-2586-0333 โทรสาร. 0-2586-0278
www.kyoceradocumentsolutions.com/th